

OPENING TIMES AND PRICES

Welcome to our 2020 fishing season starting Friday 6 March until Sunday 29 November. We are open for bank and boat fishing 7.00am to 8.00pm, or sunset (whichever is sooner), 7 days a week. In November we close at 4.00pm.

Permit Prices	
Full day, 8 trout permit	£29
Full day, 8 trout permit - concessionary*	£27
Afternoon (2pm to close), 4 trout permit	£24
Evening (4pm to close), 2 trout permit	£15
Under 17's, 2 trout permit	£10
Catch and Release, fly/predator fishing only	£20
November full day, 8 trout permit	£25

*T&C's apply, see website.

Permit prices do not include your rod licence, which is required. You can apply online for this at gov.uk/fishing-licences/buy-a-fishing-licence.

Free fishing is available for up to two children, aged 8 to 16 years, on a parent/guardians ticket, sharing the same bag limit. For fish welfare, landing nets and the use of a priest will be mandatory from the 2020 season onwards.

Permits can be purchased at the fishing lodge, alongside boat hire. You can contact the fishing lodge and shop by calling 01268 712 180.

For full details on fishing guidelines, safety and rules visit watersideparksuk.com/fishing/safety or call 0345 155 0236.



FISH ON THE WATER

Enjoy a different experience and fish out on the water by hiring one of our 36 Coulam boats or two wheely boats, all fitted with outboard motors.

Boat hire can be booked online bookwhen.com/hanningfield

Boat hire (max of two people per boat)		
	Midweek	Weekend
Day hire	£22	£29
Morning 7.00am to 1.00pm	£15	£19
Afternoon 2.00pm to close	£15	£19
Evening 4.00pm to close	£10	£10
November day hire	£20	£20

Bank holidays are charged at a weekend rate.

Free boat fishing is offered to one child, aged 8 to 16, when accompanied by a full paying parent or guardian. Life jackets are provided and must be worn at all times.



www.watersideparksuk.com
ESW

www.watersideparksuk.com/park/hanningfield
[/hanningfield](https://www.facebook.com/hanningfield)
[@fishing_at_hanningfield](https://www.instagram.com/fishing_at_hanningfield)



Your guide 2020

DISCOVER FISHING
AT HANNINGFIELD
WATERSIDE PARK

HANNINGFIELD
WATERSIDE PARK



FISHING EXTRAS

TACKLE SHOP

Our onsite shop stocks all your fishing requirements from baits and flies to rods and reels, plus a full range of accessories including clothing and tackle boxes. Our knowledgeable employees are on hand to advise you on the best products for your needs, at the best value prices. There is also a selection of cold drinks and confectionary to keep your energy up throughout the day, whether fishing or exploring the beautiful landscape.

Please be aware due to Hanningfield Reservoir being a site of Special Scientific Interest, we are unable to welcome dogs anywhere on site. We thank you in advance for helping us to protect the conservation in the area by keeping your dogs at home.

FISHING REPORTS

Posted weekly on our website you can see the most up to date information on how the reservoir is fishing, including figures such as the number of fish caught and largest weight of the season. Great information to keep you interested and hooked for your next visit!

COACHING

New to fly fishing, or want to improve your technique and catch more fish? Then call to speak to Nigel Angus, Fly Fishing & Fly Casting Coach, on 0771 059 0559 or email njangus@hotmail.com.

Don't forget to share your next catch at

[/hanningfield](https://www.facebook.com/hanningfield).

[@fishing_at_hanningfield](https://www.instagram.com/fishing_at_hanningfield)

CAFÉ ON THE WATER & GIFT SHOP

With its spectacular views over Hanningfield Reservoir and surrounding countryside, Café on the Water is one of a kind. This is a popular destination for all and well worth a visit with friends and family. Enjoy a hearty breakfast before your exciting day of fishing or refuel throughout the day.

OPENING TIMES

The café and gift shop is open all year round with varying opening and closing times. Please see our website for full details at watersideparksuk.com/park/hanningfield/café-on-the-water.



Enjoy a hearty breakfast before your exciting day of fishing, or refuel throughout the day with our delicious choices of cakes, sandwiches and hot drinks amongst the stylish interior, or choose to dine al fresco on the large outside decking area. Whichever you choose, you will be sure to enjoy the breath taking scenery.

The gift shop within the café stocks amazing home gifts and toys for that extra special person you know, or just as a treat for yourself. A great way to end your relaxing visit with a little retail therapy!

For more information please call 01268 712 182.

WELCOME TO HANNINGFIELD WATERSIDE PARK

Hanningfield Waterside Park, set within a picturesque part of Essex, is regarded by many as the best any method still water trout fishery in the UK. Located only 15 minutes from Chelmsford, this is one place you do not want to miss out on!

This season we will be stocking a minimum of 51,000 high quality rainbow trout, along with a number of home reared specimens that will include fish weighing 10lbs and up. With the options of fishing off the top of the dam, from the natural bank or from one of our 36 Coulam motor boats, every time you fish you can experience something different.

Bring along the family who can enjoy playing in the park, walking, watching the amazing wildlife, enjoy a relaxing picnic or delicious meal at our Café on the Water. There is something for everyone.

There is also easy access by road to Essex Wildlife Trust nature reserve, or you can enjoy stunning shoreline and woodland walks that link up to the trust's visitor centre. For more information visit www.essexwt.org.uk.

Hanningfield Waterside Park, Giffords Lane, Chelmsford, Essex, CM3 8HX

[/hanningfield](https://www.facebook.com/hanningfield)

[@fishing_at_hanningfield](https://www.instagram.com/fishing_at_hanningfield)

info@watersideparksuk.com

0345 155 0236 / 01268 712 180

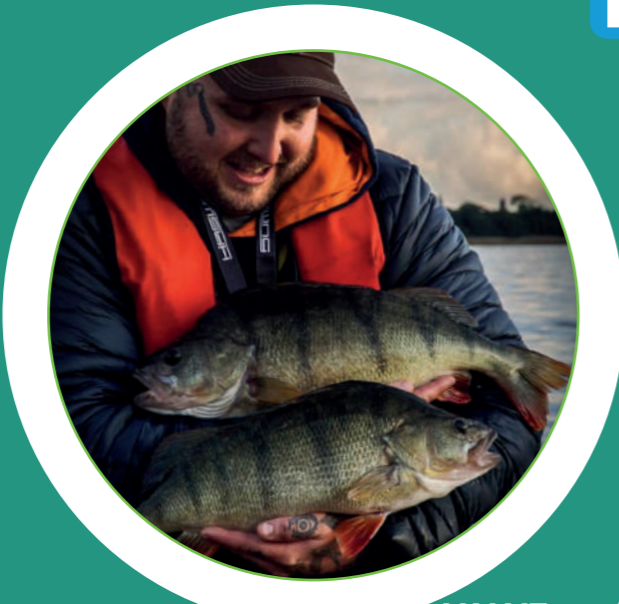
www.watersideparksuk.com/park/hanningfield



ESW
living water

KEY FACTS
 870 acres of water
 600 acres for fishing
 55 feet deep
 26 billion litres of water

- KEY**
- Parking
 - Disabled access
 - Life belt
 - Hanningfield Waterside Park
 - Picnic area
 - Dam wall
 - Natural bank
 - Out of bounds
 - Out of bounds for boats
 - Toilet
 - Portaloo
 - Café



HANNINGFIELD
 WATERSIDE PARK

