

OPENING TIMES AND PRICES

Welcome to our 2025 fishing season starting Saturday 1 Feb until Sunday 30 November.

We are open for bank and boat fishing 8.00am to 8.00pm, or half an hour before sunset (whichever is sooner), 7 days a week.

Permit Prices	
Full day, 8 trout permit	£33
Catch and Release fly/spinning/predator fishing	£23

Permit prices do not include your rod licence, which is required. You can apply online for this at [gov.uk/fishing-licences/buy-a-fishing-licence](https://www.gov.uk/fishing-licences/buy-a-fishing-licence).

Free fishing is available for up to one child, aged 8 to 16 years, on a parent/guardians ticket, sharing the same bag limit. For fish welfare, landing nets and the use of a priest will be mandatory.

We advise you to book all your permits and boat hire through our online platform at www.bookwhen.com/hanningfield to ensure you get a boat and permit for your selected day. Permits can also be purchased in the tackle shop. You can contact the fishing lodge and shop by calling **07966 879206**.

For full details on fishing guidelines, safety and rules visit:

watersideparksuk.com/fishing/safety or call **0345 155 0236**.

FISHING EXTRAS

TACKLE SHOP

Our onsite shop stocks all your fishing requirements from baits and flies to rods and reels, plus a full range of accessories including clothing and tackle boxes. Our knowledgeable employees are on hand to advise you on the best products for your needs, at the best value prices. There is also a selection of cold drinks and confectionary to keep your energy up throughout the day.



KEEP DOGS AT HOME

Please be aware due to Hanningfield Reservoir being a site of Special Scientific Interest, we are unable to welcome dogs anywhere on site. We thank you in advance for helping us to protect the conservation in the area by keeping your dogs at home.

Don't forget to share your day out and next catch with us at

[f/hanningfield](https://www.facebook.com/hanningfield)
fishing_at_hanningfield

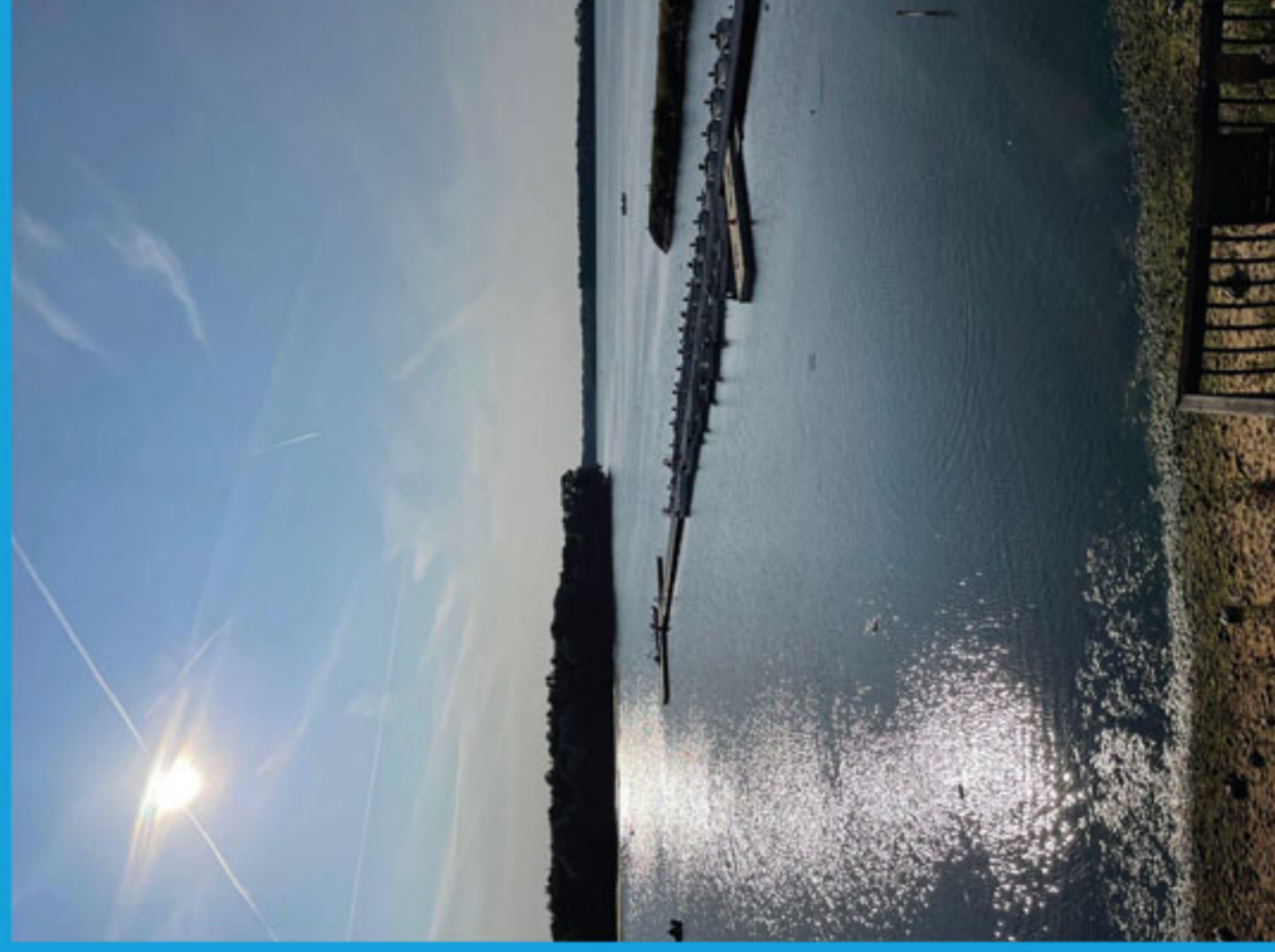
FISH ON THE WATER

Enjoy a different experience and fish out on the water by hiring one of our 36 Coulam boats or our wheely boat, all fitted with outboard motors.

Boat hire can be booked online www.bookwhen.com/hanningfield

Boat hire (max of two people per boat)	
Regular boat	£34
Accessible boat	£34

Free boat fishing is offered to one child, aged 8 to 16, when accompanied by a full paying parent or guardian. Life jackets are provided and must be worn at all times.



CAFÉ ON THE WATER & GIFT SHOP

With its spectacular views over Hanningfield Reservoir and surrounding countryside, Café on the Water is one of a kind. This is a popular destination for all and well worth a visit with friends and family. Enjoy a hearty breakfast before your exciting day of fishing or refuel throughout the day.

Visit the Café for a wide selection of takeaway treats including drinks, cakes and ice creams, or stay for a hot tasty freshly made meal.

OPENING TIMES

The Café on the Water and gift shop are open all year round with varying opening and closing times. Please see our website for full details at www.watersideparksuk.com/park/hanningfield/cafe-on-the-water.



Dine al fresco on the large outside decking area or inside amongst the stylish interior with air conditioning. Whichever you choose, you will be sure to enjoy the breath taking scenery. Our kids corner offers space for the little ones to colour, draw, or even get crafty, while you sit back and enjoy a relaxing hot drink.

The gift shop within the café stocks amazing home gifts and toys for that extra special person you know, or just as a treat for yourself. A great way to end your relaxing visit with a little retail therapy!

[f/hanningfield](https://www.facebook.com/hanningfield)
www.watersideparksuk.com/park/hanningfield/fishing
fishing_at_hanningfield



Your guide 2025

DISCOVER FISHING AT HANNINGFIELD WATERSIDE PARK

HANNINGFIELD WATERSIDE PARK



WELCOME TO HANNINGFIELD WATERSIDE PARK

Hanningfield Waterside Park, set within a picturesque part of Essex, is regarded by many as the best any method still water trout fishery in the UK. Located only 15 minutes from Chelmsford, this is one place you do not want to miss out on!

This season we will be stocking a minimum of 48,000 high quality rainbow trout, along with a number of home reared specimens that will include fish weighing 10lbs and up. With the options of fishing off the top of the dam, from the natural bank or from one of our 36 Coulam motor boats, every time you fish you can experience something different.

Bring along the family who can enjoy playing in the park, walking, watching the amazing wildlife, enjoy a relaxing picnic or a delicious meal at our Café on the Water.

There is also easy access by road to Essex Wildlife Trust nature reserve, or you can enjoy stunning shoreline and woodland walks that link up to the trust's visitor centre. For more information visit www.essexwt.org.uk.

Hanningfield Waterside Park, Giffords Lane, Chelmsford, Essex, CM3 8HX

[f/hanningfield](https://www.facebook.com/hanningfield)
fishing_at_hanningfield
info@watersideparksuk.com
0345 155 0236 / 07966 879206

www.watersideparksuk.com/park/hanningfield/fishing

Members of:



HANNINGFIELD
WATERSIDE PARK

ESSEX & SUFFOLK
Water Living water

KEY FACTS

- 870 acres of water
- 600 acres for fishing
- 55 feet deep
- 26 billion litres of water



HANNINGFIELD WATERSIDE PARK

KEY

- Parking
- Disabled access
- Life belt
- Hanningfield Waterside Park
- Picnic area
- Dam wall
- Natural bank
- Out of bounds
- Out of bounds for boats
- Toilet
- Café



THREE COMPASSES PH

WEST HANNINGFIELD

MAIN TOWER

MIDDLEMEAD BAY

MIDDLEMEAD RD

MAIN DAM

SALTMARSH POINT

GOLDFISH BOWL

PENINSULA

WEST BANK

ATLANTIS

VALVE TOWER

LIMIT OF BANK FISHING

THE INLET

HANNINGFIELD RESERVOIR

BOUNDARY BAY

LIMIT OF BOAT FISHING

NATURE RESERVE

HALL POINT

SEVEN SISTERS

SCHOOL BAY

SOUTH HANNINGFIELD RD

WE ARE HERE

HANNINGFIELD
WATERSIDE PARK
CM3 8HX

CLAYDONS FARM

LIMIT OF BANK FISHING

BOAT JETTY

LODGE BAY

THE OLD WINDMILL PH

BIRD HIDES

ESSEX WILDLIFE TRUST
VISITOR CENTRE

WELL WOOD

WARREN RD

HAWKSWOOD RD